

Technical data sheet

Product features



Cooking range gas with electric static oven

Model

SAP Code

00008940



- Device type: Combined unit
- Power consumption of the zone 1 [kW]: 8,5
- Power consumption of the zone 2 [kW]: 8,5
- Power consumption of the zone 3 [kW]: 8,5
- Power consumption of the zone 4 [kW]: 4
- Ignition: Eternal flame
- Type of internal part of the appliance 1 (eg oven): Electric
- Type of internal part of the appliance 2 (eg oven): Static
- Material: AISI 304 top plate and cladding

| | | | |
|----------------------------|--------------------|---|-----------------------------|
| SAP Code | 00008940 | Type of gas | Natural gas, propane butane |
| Net Width [mm] | 800 | Number of zones | 4 |
| Net Depth [mm] | 730 | Power consumption of the zone 1 [kW] | 8,5 |
| Net Height [mm] | 900 | Power consumption of the zone 2 [kW] | 8,5 |
| Net Weight [kg] | 100.20 | Power consumption of the zone 3 [kW] | 8,5 |
| Power electric [kW] | 6.300 | Power consumption of the zone 4 [kW] | 4 |
| Loading | 400 V / 3N - 50 Hz | Type of internal part of the appliance 1 (eg oven) | Electric |
| Power gas [kW] | 29.500 | Type of internal part of the appliance 2 (eg oven) | Static |

Technical data sheet

Technical drawing

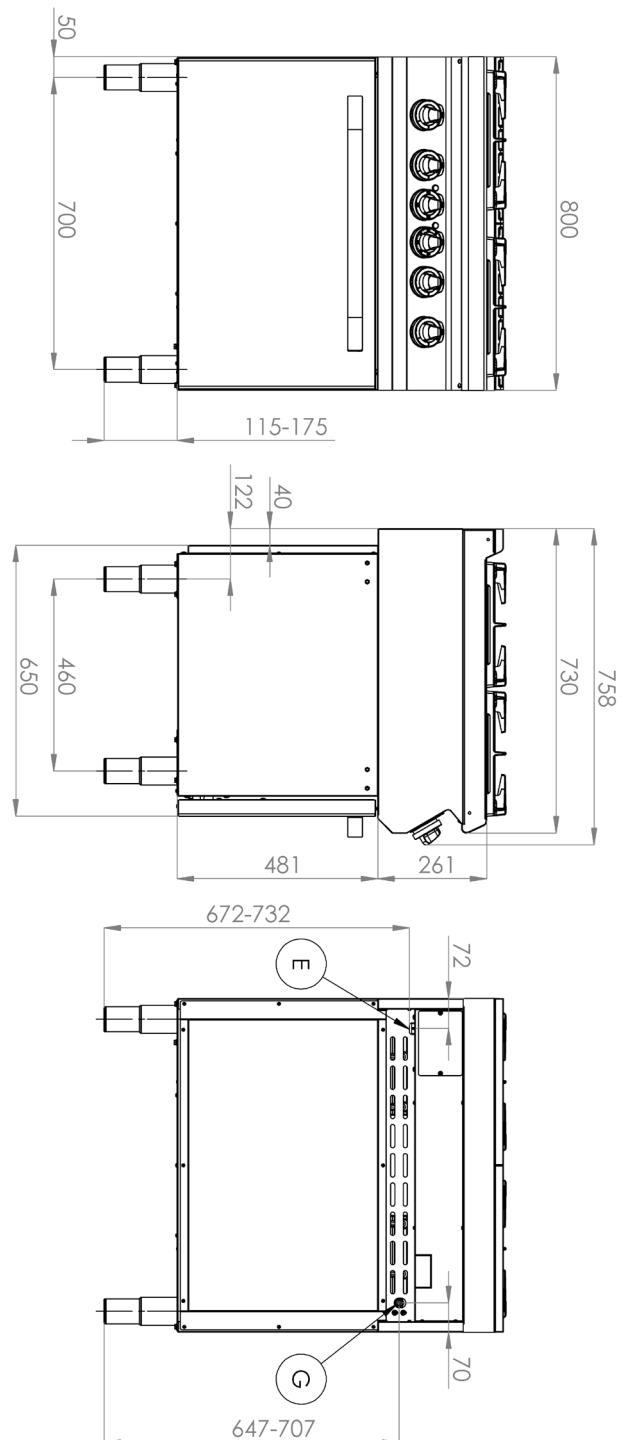


Cooking range gas with electric static oven

Model

SAP Code

00008940



Technical data sheet

Technical parameters



Cooking range gas with electric static oven

Model

SAP Code

00008940

1. SAP Code:

00008940

2. Net Width [mm]:

800

3. Net Depth [mm]:

730

4. Net Height [mm]:

900

5. Net Weight [kg]:

100.20

6. Gross Width [mm]:

840

7. Gross depth [mm]:

800

8. Gross Height [mm]:

1080

9. Gross Weight [kg]:

110.00

10. Device type:

Combined unit

11. Construction type of device:

Stationary

12. Power electric [kW]:

6.300

13. Loading:

400 V / 3N - 50 Hz

14. Power gas [kW]:

29.500

15. Ignition:

Eternal flame

16. Type of gas:

Natural gas, propane butane

17. Exterior color of the device:

Stainless steel

18. Material:

AISI 304 top plate and cladding

19. Worktop type:

Molded - comfortable cleaning maintenance

20. Worktop material:

AISI 304

21. Worktop Thickness [mm]:

1.50

22. Number of zones:

4

23. Power consumption of the zone 1 [kW]:

8,5

24. Power consumption of the zone 2 [kW]:

8,5

25. Power consumption of the zone 3 [kW]:

8,5

26. Power consumption of the zone 4 [kW]:

4

27. Grid material:

Cast iron

28. Service accessibility:

Trough the frontal panel

Technical data sheet

Technical parameters



Cooking range gas with electric static oven

Model

SAP Code

00008940

29. Safety thermocouple:

Yes

30. Adjustable feet:

Yes

31. Number of burners/hot plates:

4

32. Type of gas cooking zones:

Powerfull

33. Burner type:

Brass, detachable

34. Oven Type:

electrical static

35. Oven power electric [kW]:

6.30

36. Oven size:

GN 2/1

37. Type of internal part of the appliance 1 (eg oven):

Electric

38. Type of internal part of the appliance 2 (eg oven):

Static

39. Gasket:

Yes

40. Connection to a ball valve:

1/2

41. Cross-section of conductors CU [mm²]:

1

- Výkon (kW): 3,7-5 (230 V); 6,4-8,7 (400 V)